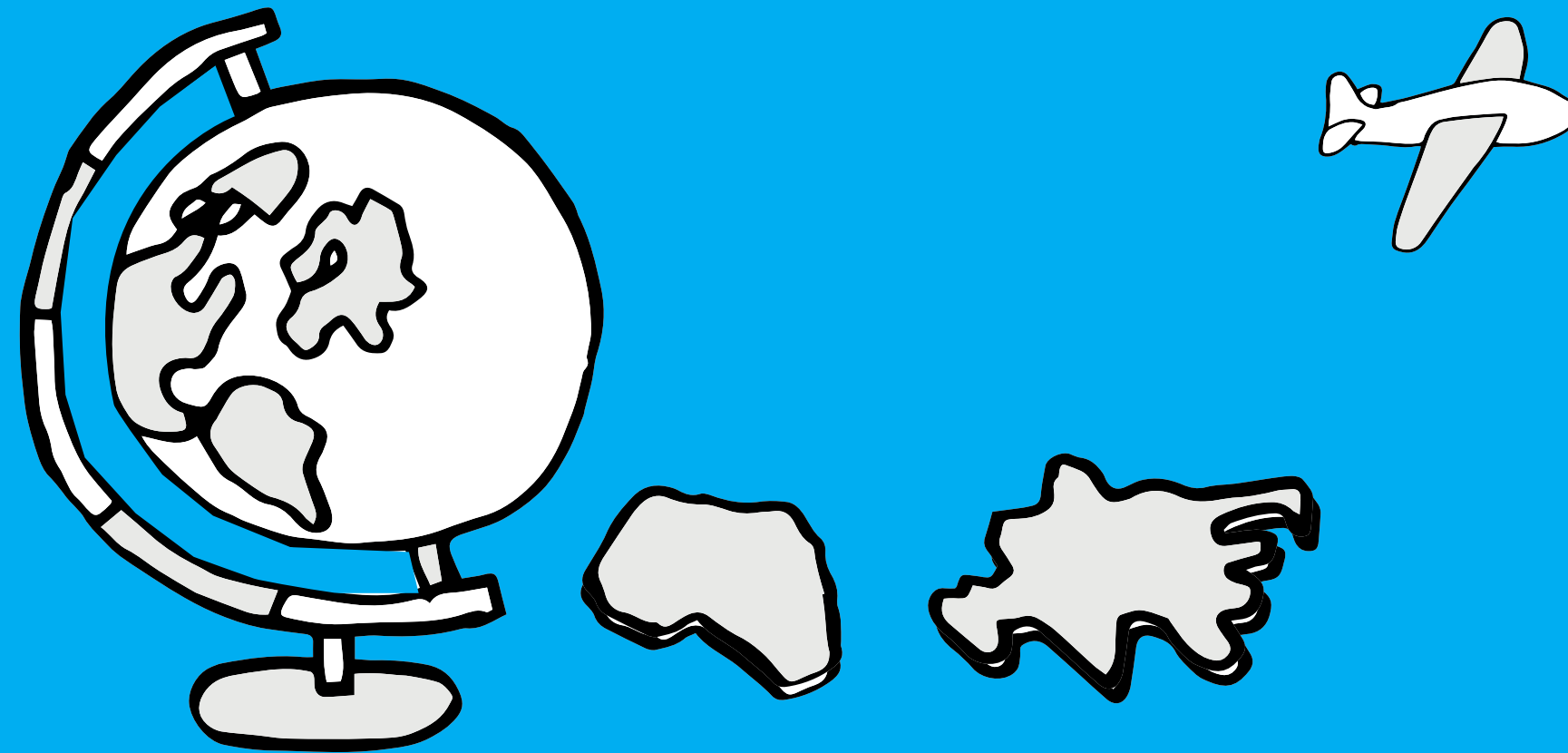


StudioSpass

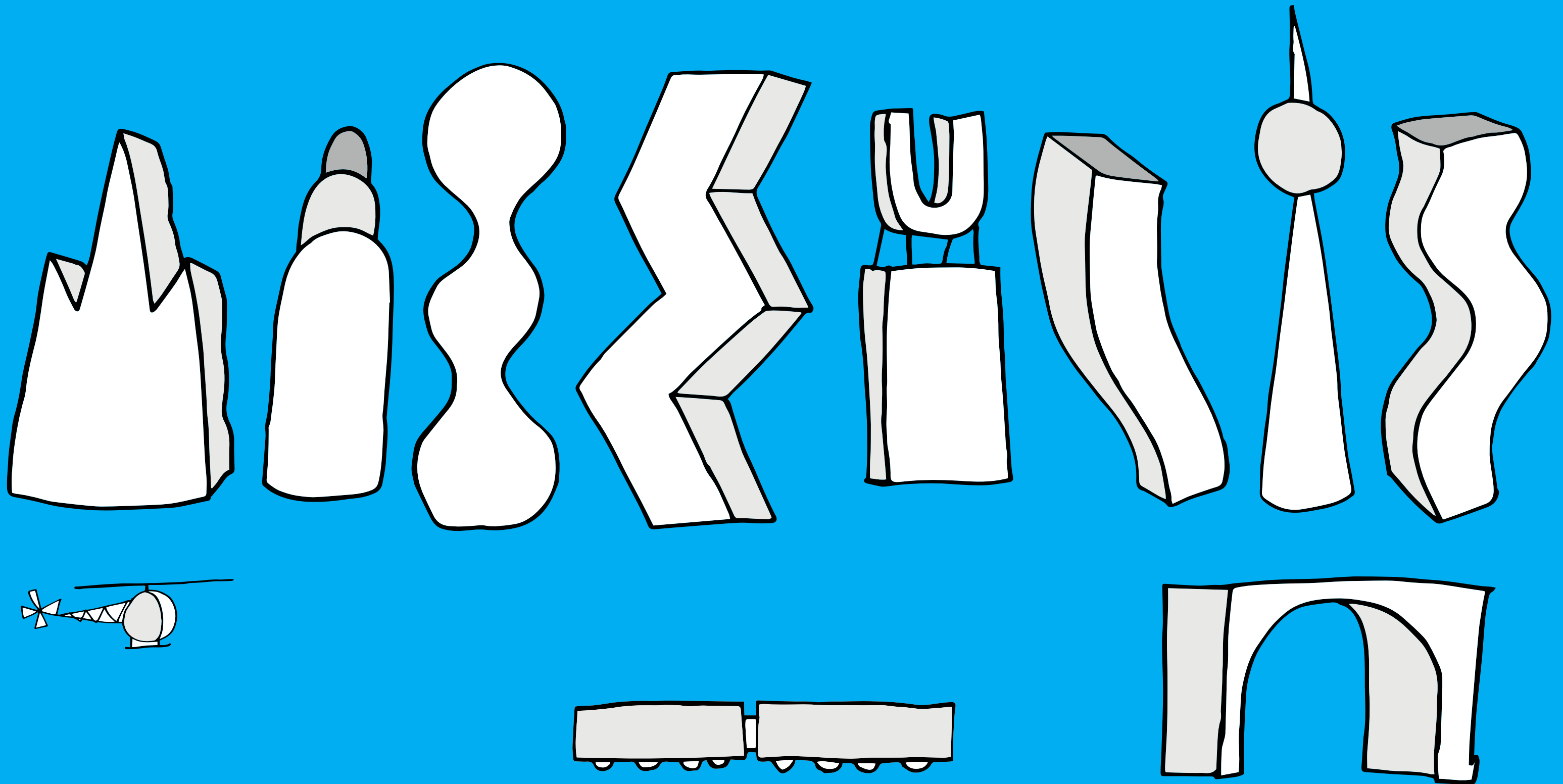
Ultimaker

Shape impressions for 3D model contest

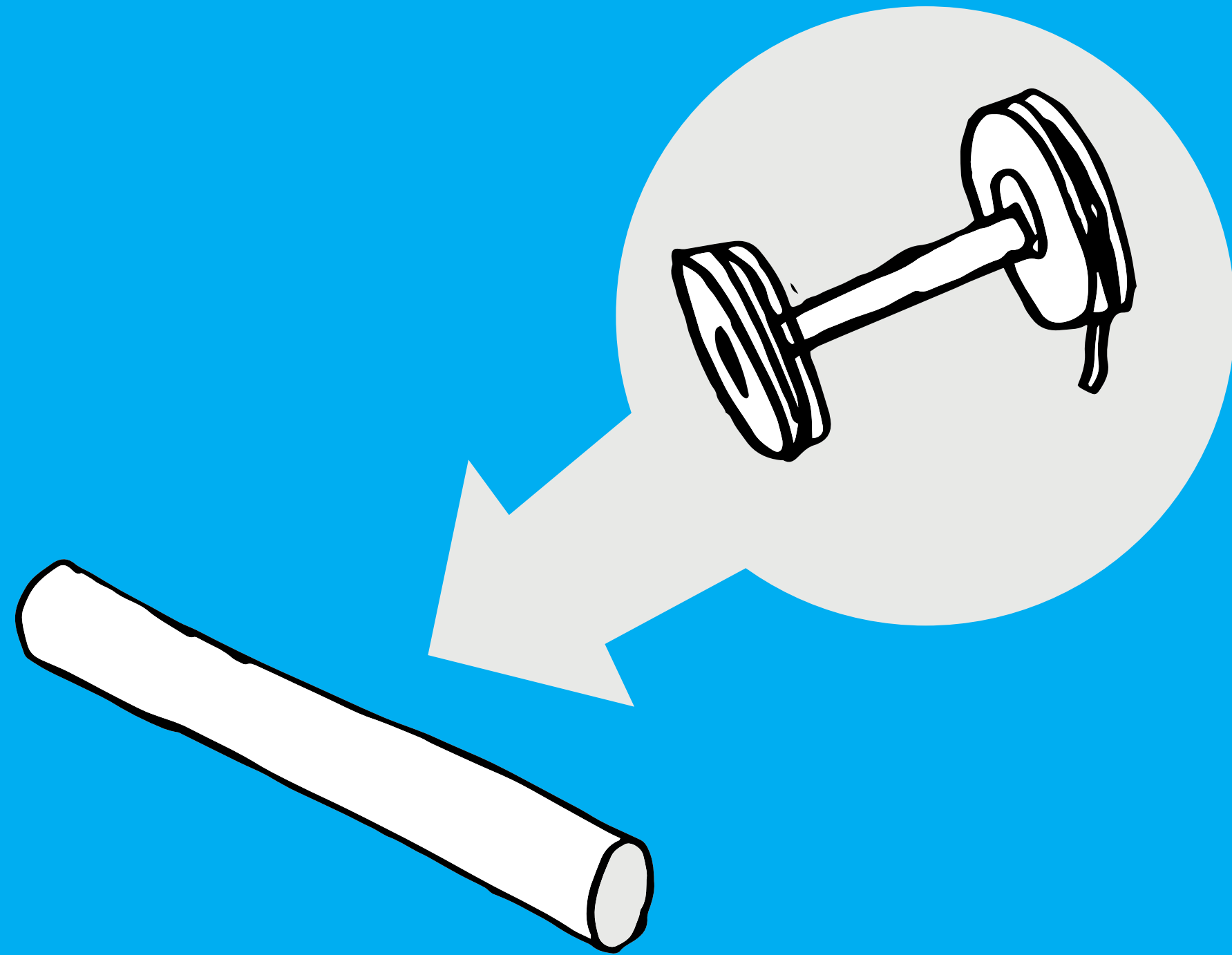
**These are the elements we need for
the scenery used in the new brand images:**



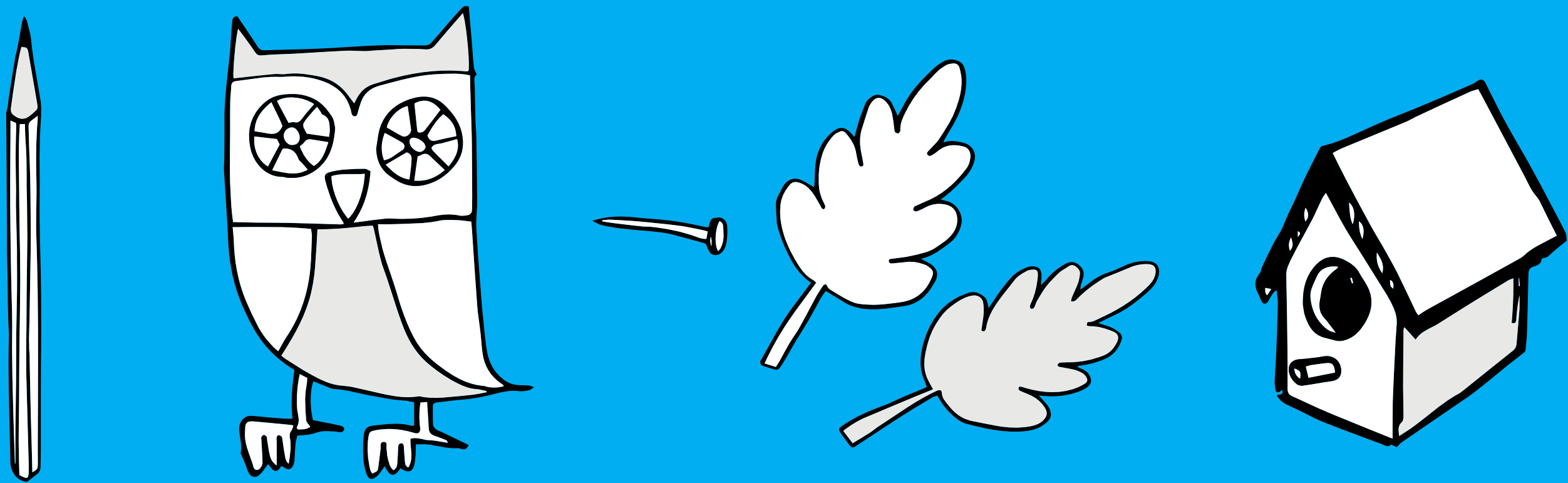
**A globe build from multiple pieces. A small airplane.
All continents as loose parts that can be placed/pinned on the globe.**



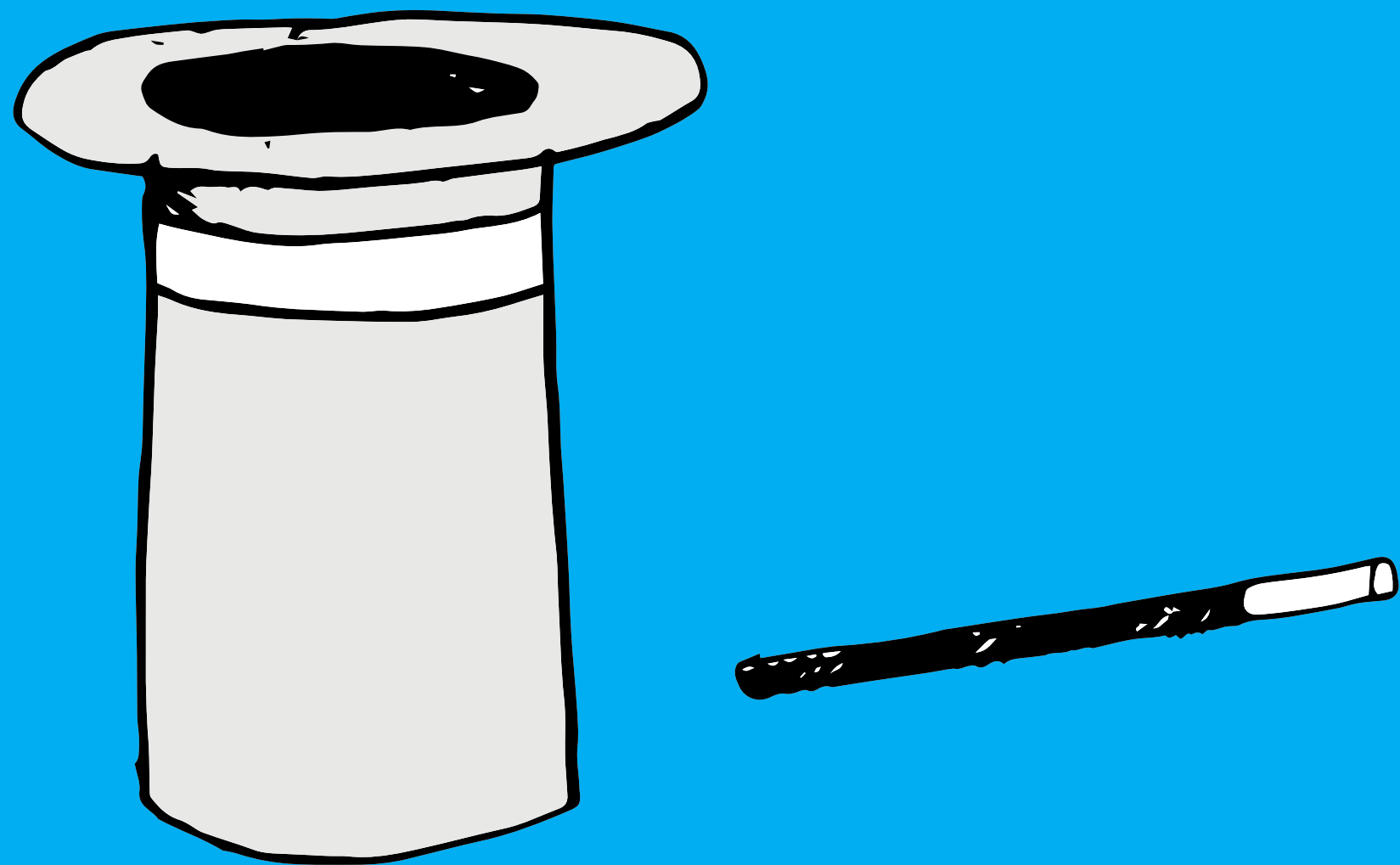
**All these buildings, a helicopter and a subway.
Multiple parts of this bridge to create an elevated subway track.**



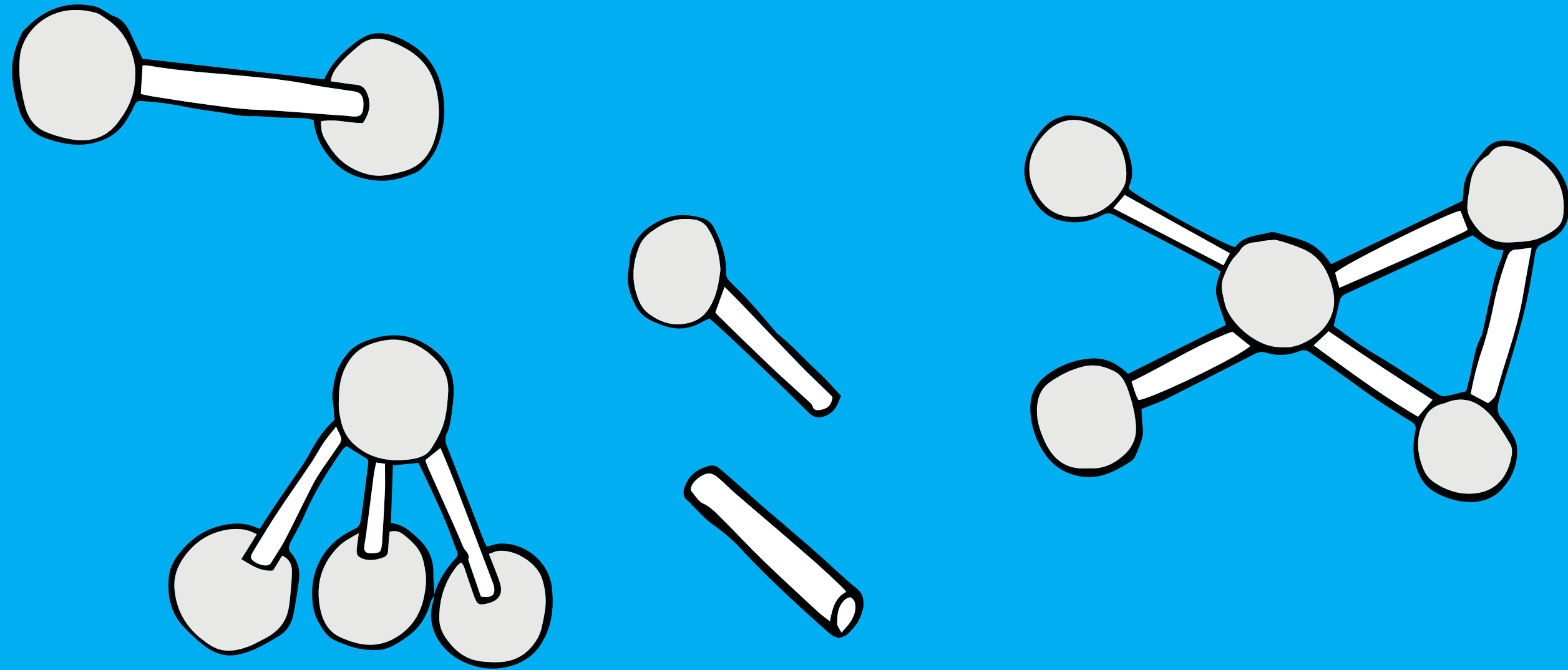
a stick to hang two rolls of ultimaker material.



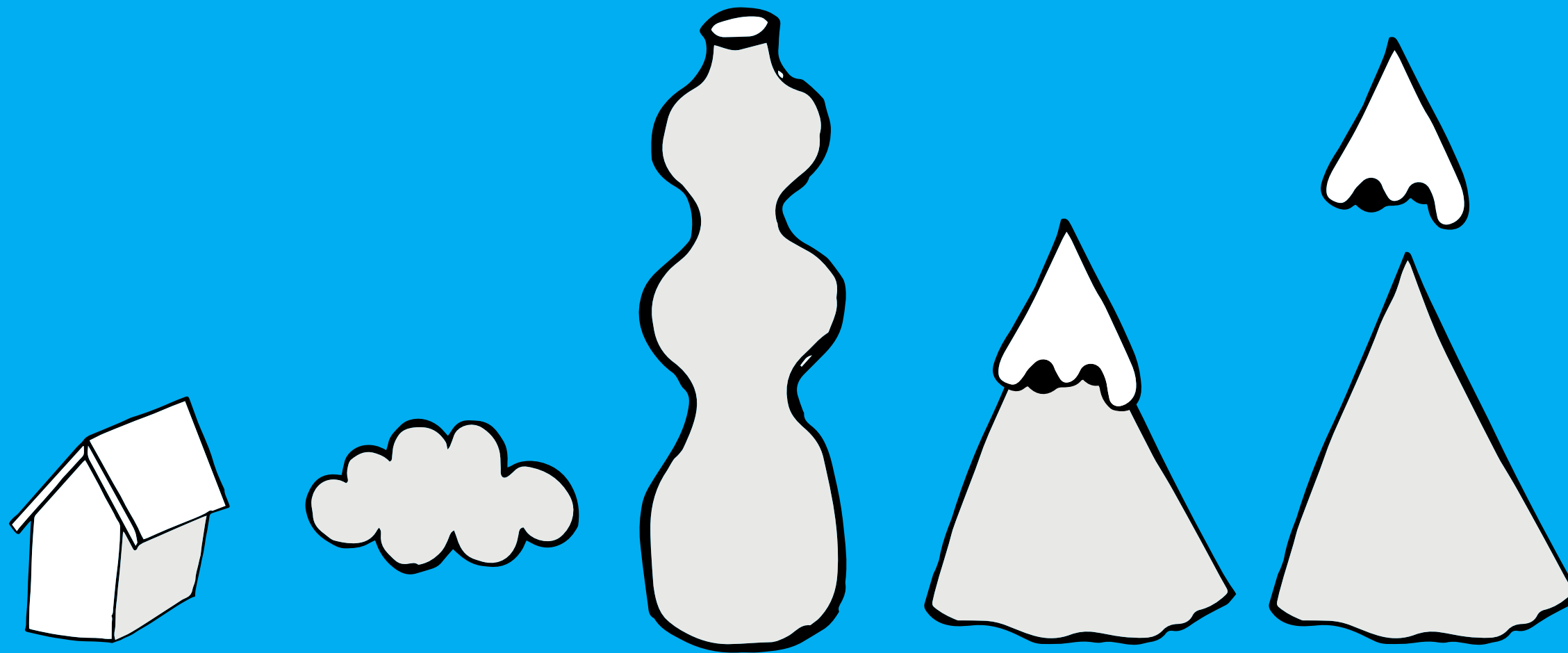
A pencil, an owl, a nail, several leaves and a classic bird house.



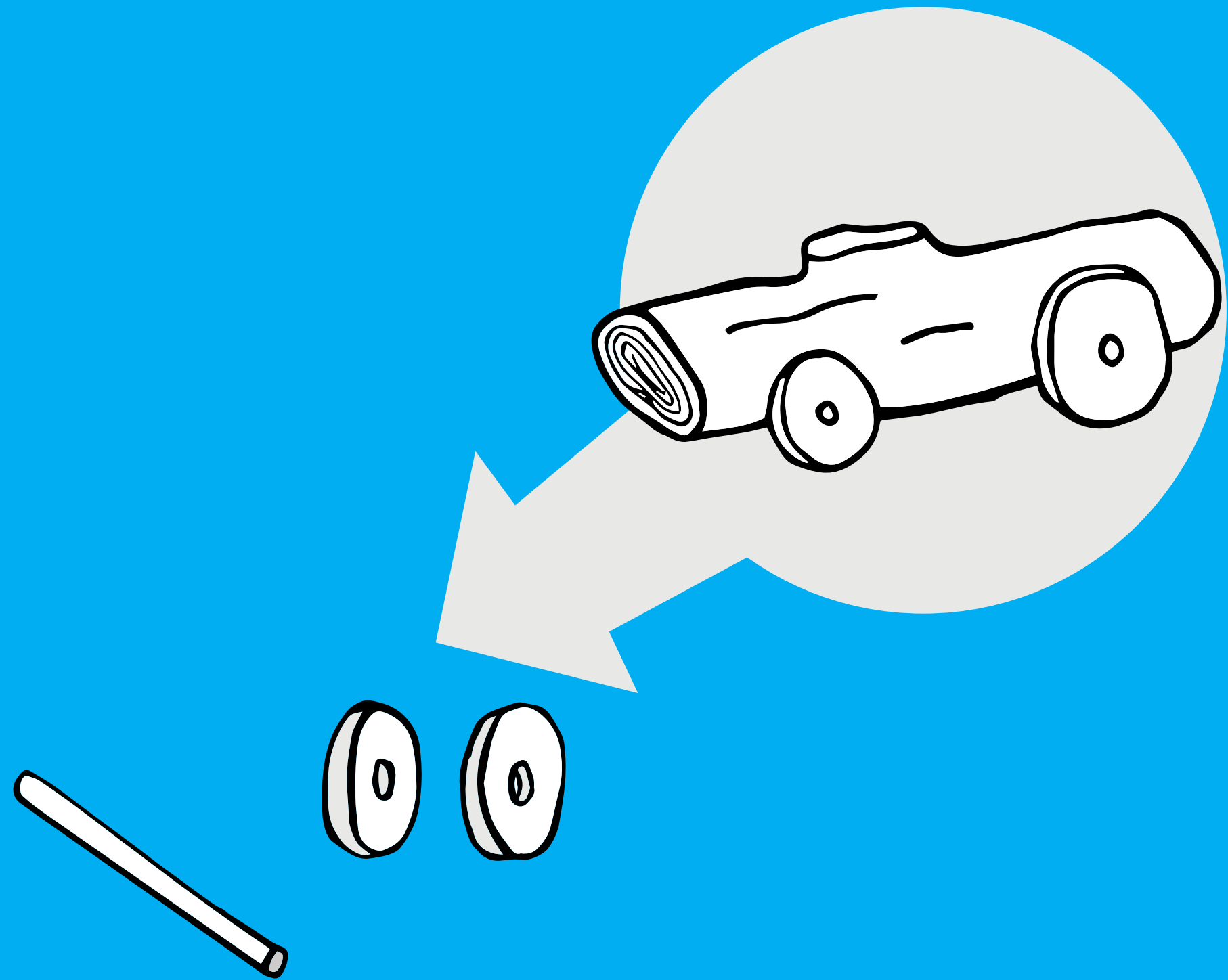
A very high magician's hat and magic stick.



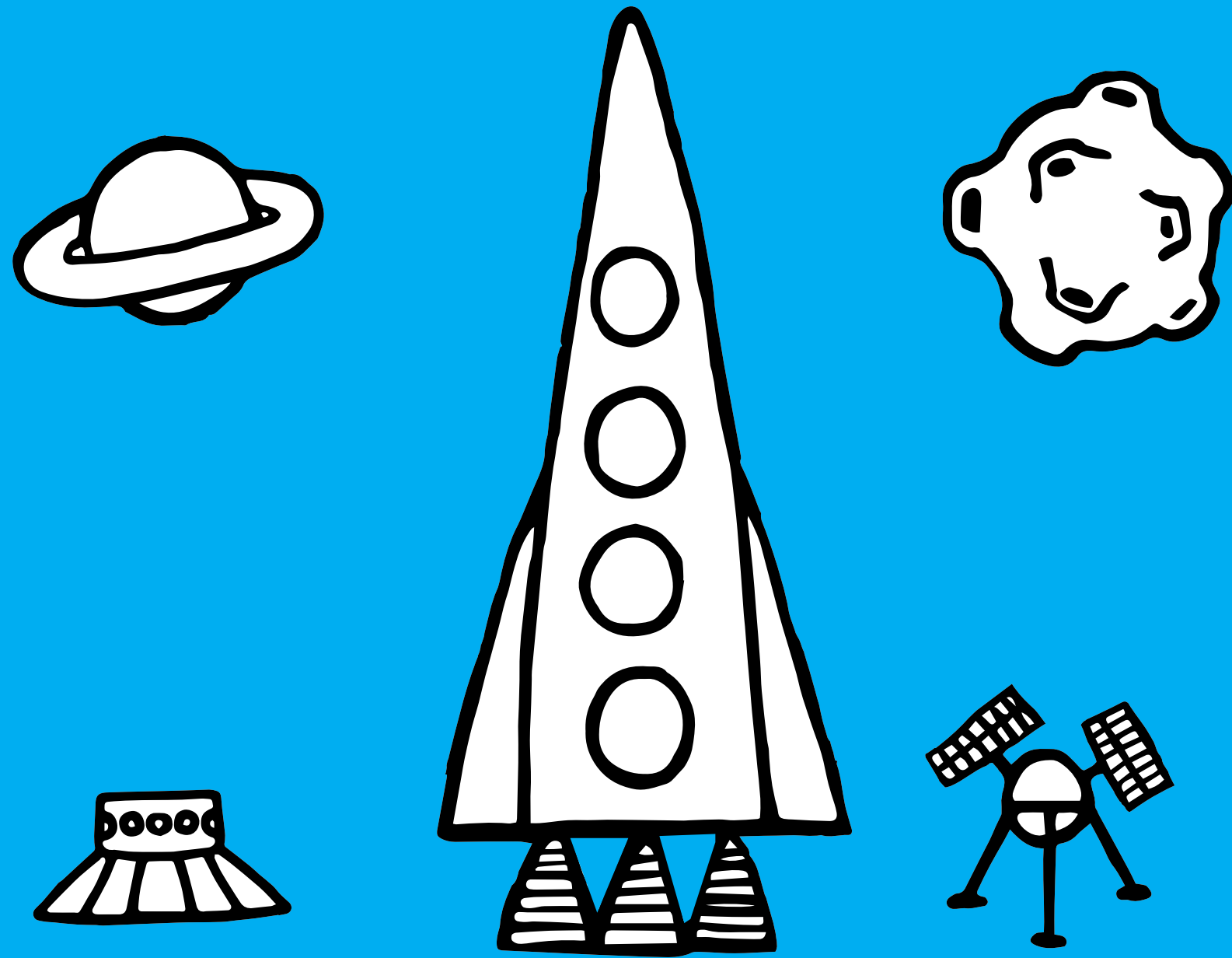
Multiple pieces of a modular system to create these scientific shapes.



**A house, two clouds and a vase.
Multiple mountain's with a snowy top.**



Wheels in different sizes to create little cars from branches.



An U.F.O., a large rocket, a meteor, a satellite and a planet.

StudioSpass

StudioSpass

Hoogstraat 170
3011 PV Rotterdam
The Netherlands
T +31 6 461 558 54
mail@studiospass.com

www.studiospass.com